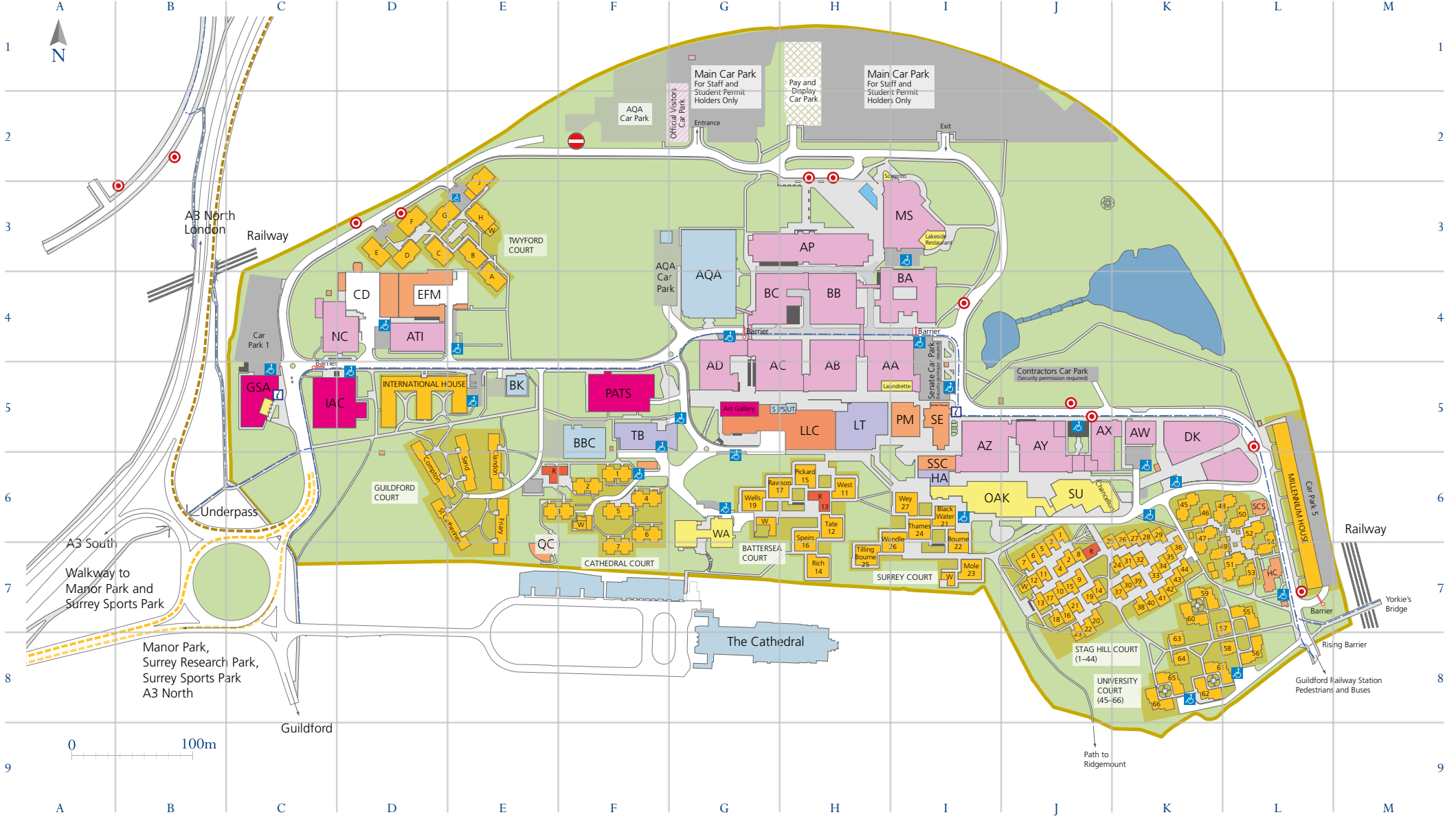
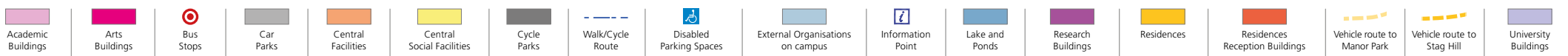


Stag Hill Campus



Legend



Buildings

Building Name [Building Code]	Grid Reference
AA Academic Block [AA]	H5
AB Academic Block [AB]	H5
AC Academic Block [AC]	G5
AD Academic Block [AD]	G5
AQA (Assessment & Qualifications Alliance) [AQA]	G4
ATI (Advanced Technology Institute) [ATI]	D4
Austin Pearce Building [AP]	H3
AW Wolfson Cytotech Building [AW]	K5
AX Academic Block [AX]	J5
AY Academic Block [AY]	J6
AZ Academic Block [AZ]	I6
BA Building [BA]	I4
BB Academic Block [BB]	H4
BBC Building [BBC]	F5
Boiler House [SE]	I5
Cathedral	G8
Central Distribution [CD]	D4
Centre for Wellbeing [SCS]	L6
Duke of Kent Building [DK]	K6
Estates & Facilities Management [EFM]	D4
GSA (Guildford School of Acting) [GSA]	C5
Health Centre [HC]	L7
Ivy Arts Centre [IAC]	C5
Lecture Theatre Block [LT]	H5
Library and Learning Centre [LLC]	H5
NatWest Bank [BK]	E5
Nodus Centre [NC]	C4
Oak Suite (Oak House) [OAK]	I6
PATS (Performing Arts Technology Studio) [PATS]	F5
Philip Marchant Building [PM]	I5
Quiet Centre [QC]	E7
Management School [MS]	I3
Senate House [SE]	I5
Student Services Centre [SSC]	I6
Teaching Block [TB]	F5
Students' Union [SU]	J6
University Hall [HA]	I6
Wates House [WA]	G6

Information and Enquiries

Information (Senate House)	I6
Information (GSA)	C5
Security (Senate House)	I5
Conference Office (Oak)	I5

Residences

Building Name [Building Code]	Grid Reference
Accommodation Office (Philip Marchant Building) [PM]	I5
Battersea Court	H6
– Reception	H6
Cathedral Court	F6
– Reception	E6
Guildford Court	E6
– Reception	E6
International House	D5
– Reception	E6
Millennium House	L6
– Reception	J7
Stag Hill Court	J7
– Reception	J7
Surrey Court	I7
– Reception	H6
Twyford Court	D3
– Reception	E6
University Court	L7
– Reception	J7

Pay-and-display Car Park

Between 7.30am and 5pm on weekdays, visitors may park in the pay-and-display car park on Stag Hill, which is signposted from the main entrance.

Pay-and-display tickets can be bought from the payment machines in the car park at the following rates.

Up to 1 hour	£0.60
Up to 2 hours	£1.20
Up to 4 hours	£4.30
Up to 6 hours	£6.50
Over 6 hours	£6.50

Parking with a Permit

Between 7.30am and 5pm, Monday to Friday, parking in all car parks other than the pay-and-display area are for permit holders only.

Your host Faculty or Department may issue you with a visitor parking permit. If you are unsure whether this is the case, please contact your host in advance of your visit.

For details of the eligibility criteria for student parking permits, please see our website.

<http://portal.surrey.ac.uk/transport>

In an Emergency

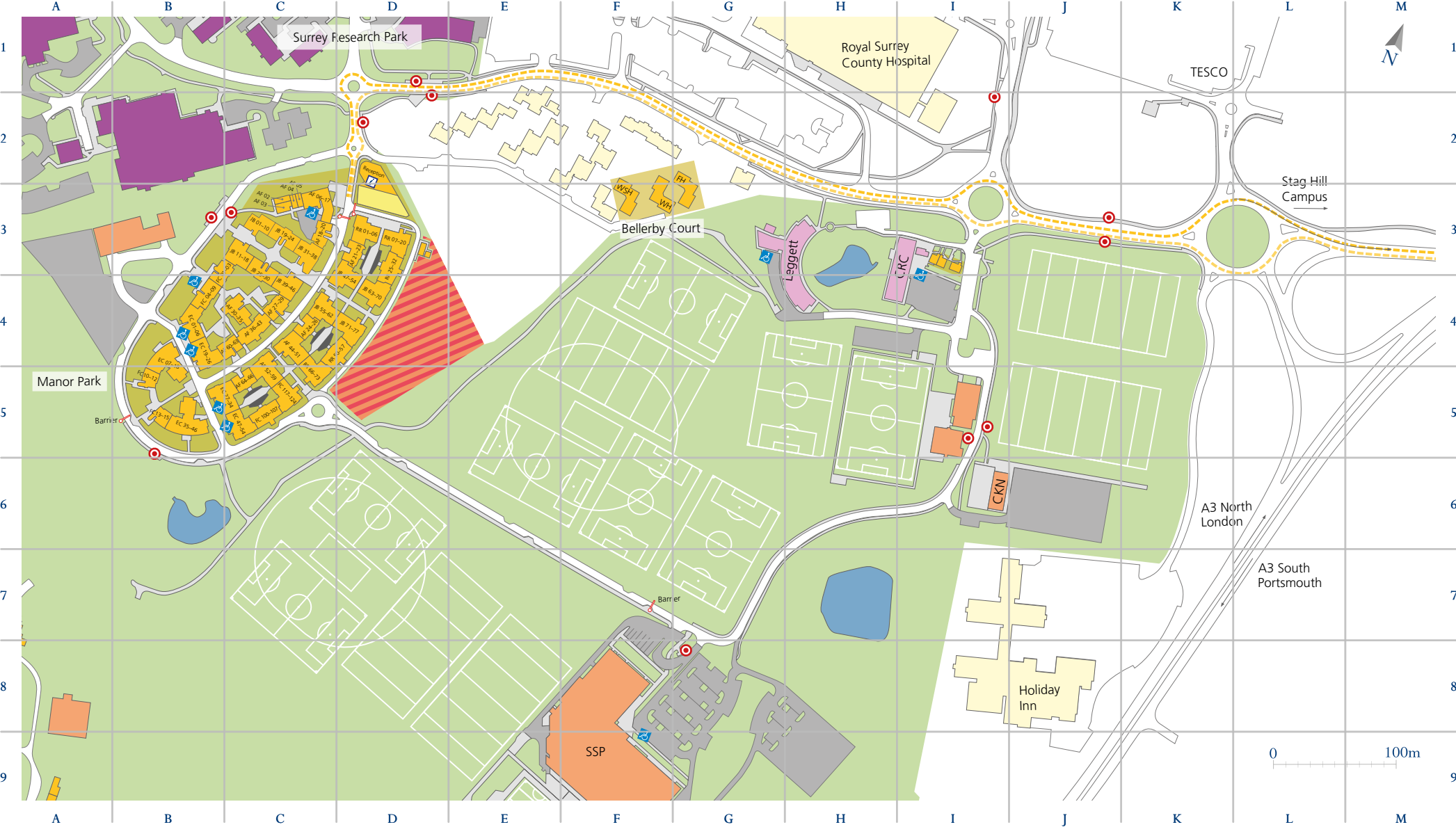
On Campus	T: 3333
Off Campus	T: 999



Useful Locations

Department	Building Name	Location	Department	Building Name	Location
AC Teaching Rooms	AC Academic Block	G5	Laundrette	AA Academic Block	H5
Additional Learning Support	Library & Learning Centre	G5	Lecture Theatres A to M	Lecture Theatre Block	H5
Administration	Senate House	I5	Lewis Elton Art Gallery	Library & Learning Centre	G5
Audio Visual Services	Lecture Theatre Block	H5	Marketing and Communications	Senate House	I5
Banks (including cash point)	Natwest Bank	E5	Oak Suite	Oak House	I6
	Santander	G5	Post Office (within Shop)	Library & Learning Centre	H5
Bookshop	Library & Learning Centre	H5	Post Room	Central Distribution	D4
Careers Service	Philip Marchant	I5	Purchasing & Procurement	Senate House	I5
Cashiers	Senate House	I5	Research and Enterprise Support	Senate House	I6
Cash Point	Students' Union	J6	Roots Café/Bar	Oak House	I6
Chancellor's Bar/Restaurant	Students' Union	K6	Safety Office	AX Academic Block	J5
Chaplaincy Offices	AZ Academic Block	I6	Security Office (open 24 Hours)	Senate House	I5
Computing Services	Austin Pearce	H3	Shop (with Post Office)	Library & Learning Centre	H5
Conference Office	Oak	I5	Sorrento Café	Management School	H3
Educational Liaison Centre	Senate House	I5	Starbucks Coffee Shop	Guildford School of Acting (GSA)	C5
Griffiths Lecture Theatre	Lecture Theatre Block	H5		Oak House	I6
Hillside Restaurant	Oak House	I6	Student Services Centre	Hall Undercroft	I5
Information Office	Senate House	I5	Students' Union	Students' Union	J6
International Student Office	Philip Marchant	I5	Surrey Design and Print	Library & Learning Centre	G5
International Study Centre	Philip Marchant	I5	Teaching Block 1 to 23	Teaching Block	F5
Islamic Prayer Centre	AA Academic Block	H5	University of Surrey Television	Library & Learning Centre	G5

Manor Park Campus



Legend

- | | | | | | | | | | | | | | | | | | | |
|--------------------|----------------|-----------|-----------|--------------------|---------------------------|-------------|------------------|------------------|-------------------------|----------------------------------|-------------------|----------------|--------------------|------------|--------------------------------|-----------------------------|----------------------------|----------------------|
| | | | | | | | | | | | | | | | | | | |
| Academic Buildings | Arts Buildings | Bus Stops | Car Parks | Central Facilities | Central Social Facilities | Cycle Parks | Walk/Cycle Route | Development Area | Disabled Parking Spaces | External Organisations on campus | Information Point | Lake and Ponds | Research Buildings | Residences | Residences Reception Buildings | Vehicle route to Manor Park | Vehicle route to Stag Hill | University Buildings |



Buildings

Building Name [Building Code]	Location
Campus Kids Nursery [CKN]	B16
Clinical Research Centre [CRC]	B13
The Leggett Building [Leggett]	H3
Surrey Sports Park [SSP]	F9

Restaurants, Cafés and Bars

Building Name	Location
Heart+Soul [Reception Building]	D4
Starbucks Coffee Shop [SSP]	F9
The Bench [SSP]	F9

Parking at Manor Park and Surrey Sports Park

Manor Park is a car-free campus and only vehicles with prior permission may park at this site.

Visitors to the Surrey Sports Park may park in the car park at the front of the Sports Park building. Parking in all other car parking areas are for permit holders only.

Information and Enquiries

Information (Manor Park reception)	C3
Security (Manor Park reception)	C3

In an Emergency

On Campus	T: 3333
Off Campus	T: 999

These locations are subject to change and provide a guide only. Visitors should check the location in advance. Alternatively, please come to the main reception (Senate House, Stag Hill campus).

For details of wheelchair access on campus please visit: www.surrey.ac.uk/als

Residences

Building Name [Building Code]	Location
Manor Park Accommodation	
– Reception	D2
Belleby Court	
– Francis Harrison House [FH]	G3
– Wealden House [WH]	F3
– West Sussex House [WSH]	F3

Block A

– EC7–18	B5
– EC35–46	B5
– FC10–12	B5
– FC13–15	B5

Block B

– AF27–29	C4
– AF30–35	C4
– AF36–43	C4
– AF60–63	C4
– EC01–06	B4
– EC19–26	B5
– FC01–03	B4
– FC04–09	B4
– JB11–18	C3
– JB25–30	C4
– JB39–46	C4

Block C

– AF02–05	C3
– AF06–17	C3
– AF18–20	C3
– JB01–10	C3
– JB19–24	C3
– JB31–38	C3

Block D

– AF21–23	D3
– JB47–54	D4
– JB63–70	D4
– RR01–06	D3
– RR07–20	D3
– RR25–32	D4

Block E

– AF24–26	C4
– AF44–51	C4
– JB55–62	C4
– JB71–77	D4
– RR50–57	D4
– RR66–73	C5

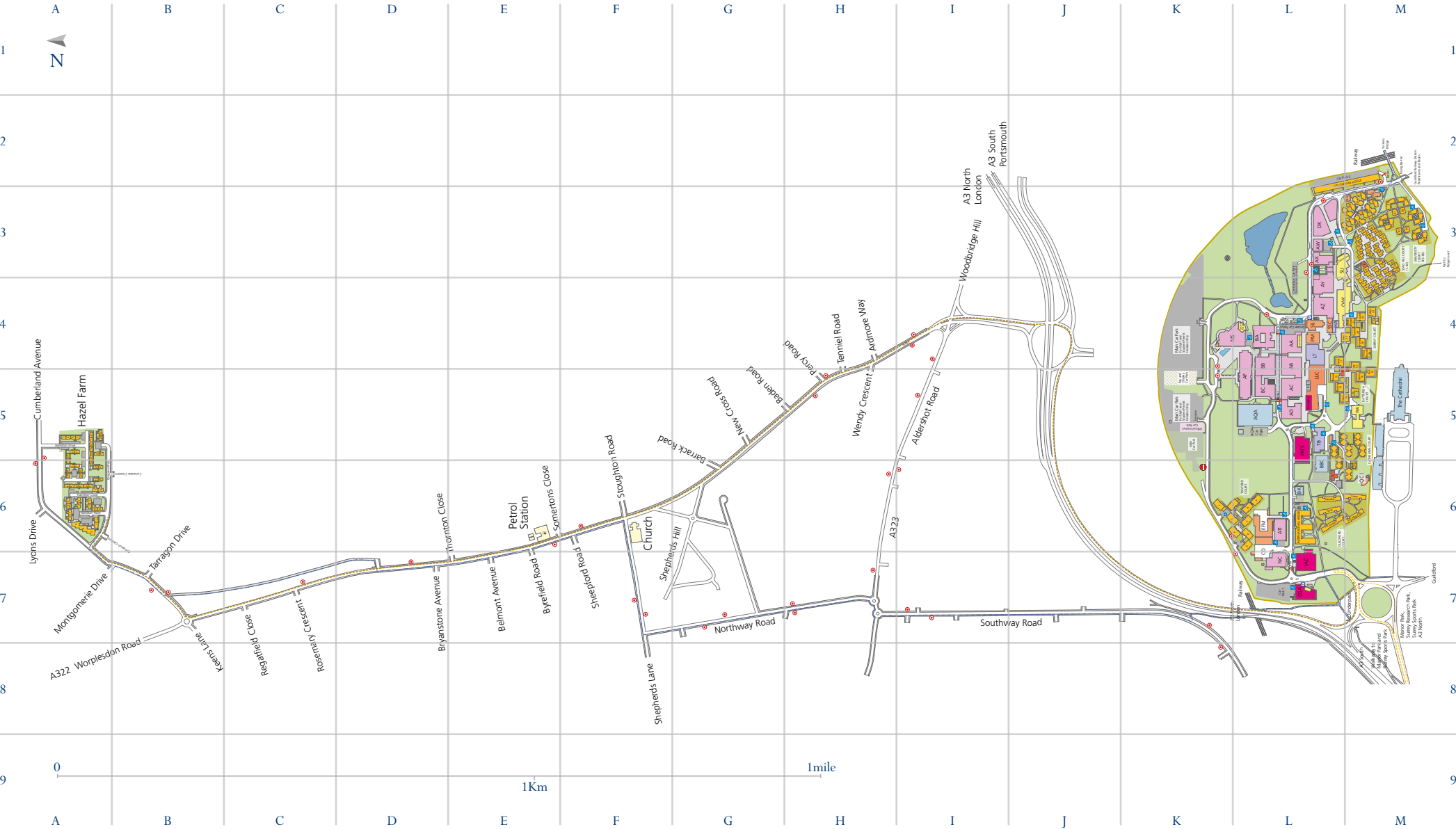
Block F

– AF52–59	C5
– AF64–66	C5
– EC27–34	C5
– EC47–54	C5
– FC100–107	C5
– FC117–124	C5

Legend

Academic Buildings	Arts Buildings	Bus Stops	Car Parks	Central Facilities	Central Social Facilities	Cycle Parks	Walk/Cycle Route	Development Area	Disabled Parking Spaces	External Organisations on campus	Information Point	Lake and Ponds	Research Buildings	Residences	Residences Reception Buildings	Vehicle route to Manor Park	Vehicle route to Stag Hill	University Buildings
--------------------	----------------	-----------	-----------	--------------------	---------------------------	-------------	------------------	------------------	-------------------------	----------------------------------	-------------------	----------------	--------------------	------------	--------------------------------	-----------------------------	----------------------------	----------------------

Hazel Farm to Stag Hill Campus



Legend

- Academic Buildings
- Arts Buildings
- Bus Stops
- Car Parks
- Central Facilities
- Central Social Facilities
- Cycle Parks
- Walk/Cycle Route
- Development Area
- Disabled Parking Spaces
- External Organisations on campus
- Information Point
- Lake and Ponds
- Research Buildings
- Residences
- Residences Reception Buildings
- Vehicle route to Stag Hill from Hazel Farm
- University Buildings

Hazel Farm



Legend

Academic Buildings	Arts Buildings	Bus Stops	Car Parks	Central Facilities	Central Social Facilities	Cycle Parks	Walk/Cycle Route	Development Area	Disabled Parking Spaces	External Organisations on campus	Information Point	Lake and Ponds	Research Buildings	Residences	Residences Reception Buildings	Vehicle route to Stag Hill from Hazel Farm	University Buildings

From Hazel Farm to Stag Hill

By Car

Leave Hazel Farm, turning left onto Cumberland Avenue. At mini-roundabout turn left onto A322 (Worplesdon Road) towards Guildford. Continue through two sets of traffic lights until you reach the large roundabout (under A3). At large roundabout (under A3) keep right and head towards A3 Portsmouth. Join A3. Take first exit heading towards University/Guildford Cathedral. Take first left off roundabout onto Stag Hill campus.

By Bus

Bus 26 towards Guildford, Friary Bus Station. Service run by Arriva Surrey & West Sussex

Cycling/Walking

Leave Hazel Farm, turning left onto Cumberland Avenue. 30 metres before mini-roundabout turn left onto service road. Follow service road until you join Worplesdon Road. Cross the A322 (Worplesdon Road) using the pedestrian crossing and turn left towards Guildford. Follow A322 until you reach traffic lights/crossroads. Turn right onto Shepherds Lane. Take first left onto Northway Road. At the bottom of Northway Road cross A323 (Aldershot Road), crossing on the right-hand side of the roundabout onto Southway Road (opposite). Proceed along Southway Road until you reach a parade of shops. Turn left onto underpass and proceed under the A3 using footpath, turn left towards campus at railings. Turn left towards campus at top of footpath.

Information and Enquiries

Information Senate House (Stag Hill)
Security Senate House (Stag Hill)

In an Emergency

On Campus T: 3333
Off Campus T: 999

These locations are subject to change and provide a guide only. Visitors should check the location in advance. Alternatively, please come to the main reception (Senate House, Stag Hill campus).

For details of wheelchair access on campus please visit: www.surrey.ac.uk/als

Residences

Building Name [Building Code]	Location
- TV/Laundrette/Office [TV]	D4
- Laundrette [*]	B4
Hamilton Close	
- 1 [1]	C4
- 2 [2]	B4
- 3 [3]	C4
- 4 [4]	B4
- 5 [5]	C3
- 6 [6]	B3
- 7 [7]	C4
- 8 [8]	C5
Hamilton Drive	
- 1 [1]	E3
- 3 [3]	E3
- 5 [5]	E3
- 7 [7]	E4
- 12 [12]	D3
- 14 [14]	D3
- 16 [16]	D3
- 18 [18]	D4
- 20 [20]	C4
- 22 [22]	C4
- 24 [24]	D4
- 26 [26]	D3
- 28 [28]	C3
- 30 [30]	C3
- 33 [33]	C4
- 35 [35]	C4
- 37 [37]	C4
- 39 [39]	C4
- 41 [41]	C3
- 43 [43]	C3
- 9 [9]	E4
- 11 [11]	D4
- 13 [13]	D4
- 15 [15]	D4
- 21 [21]	D4
- 23 [23]	D4
- 17 [17]	D4
- 19 [19]	D5
- 25 [25]	D4
- 27 [27]	D4
- 29 [29]	D4
- 31 [31]	D4
Hamilton Place	
- 1 [1]	B4
- 2 [2]	B4
- 3 [3]	B4
- 4 [4]	B4
- 5 [5]	B4
- 6 [6]	B3
- 7 [7]	B3
- 8 [8]	B4
- 9 [9]	B4
Oregano Way	
- 30 [30]	E4
- 32 [32]	E4